



DEVELOPER : IN INFRA

CONTACT : 99099 77874, 92654 76865

RERA : PR/GJ/GANDHINAGAR/GANDHINAGAR/GANDHINAGAR MUNICIPAL CORPORATION/MAA13648/100624/310328

SwastiK Homes

3BHK: Luxury, Comfort, Convenience.



*Reaching the pinnacle of luxury
and comfort in lifestyle.*

26 HOMES

12 SHOPES

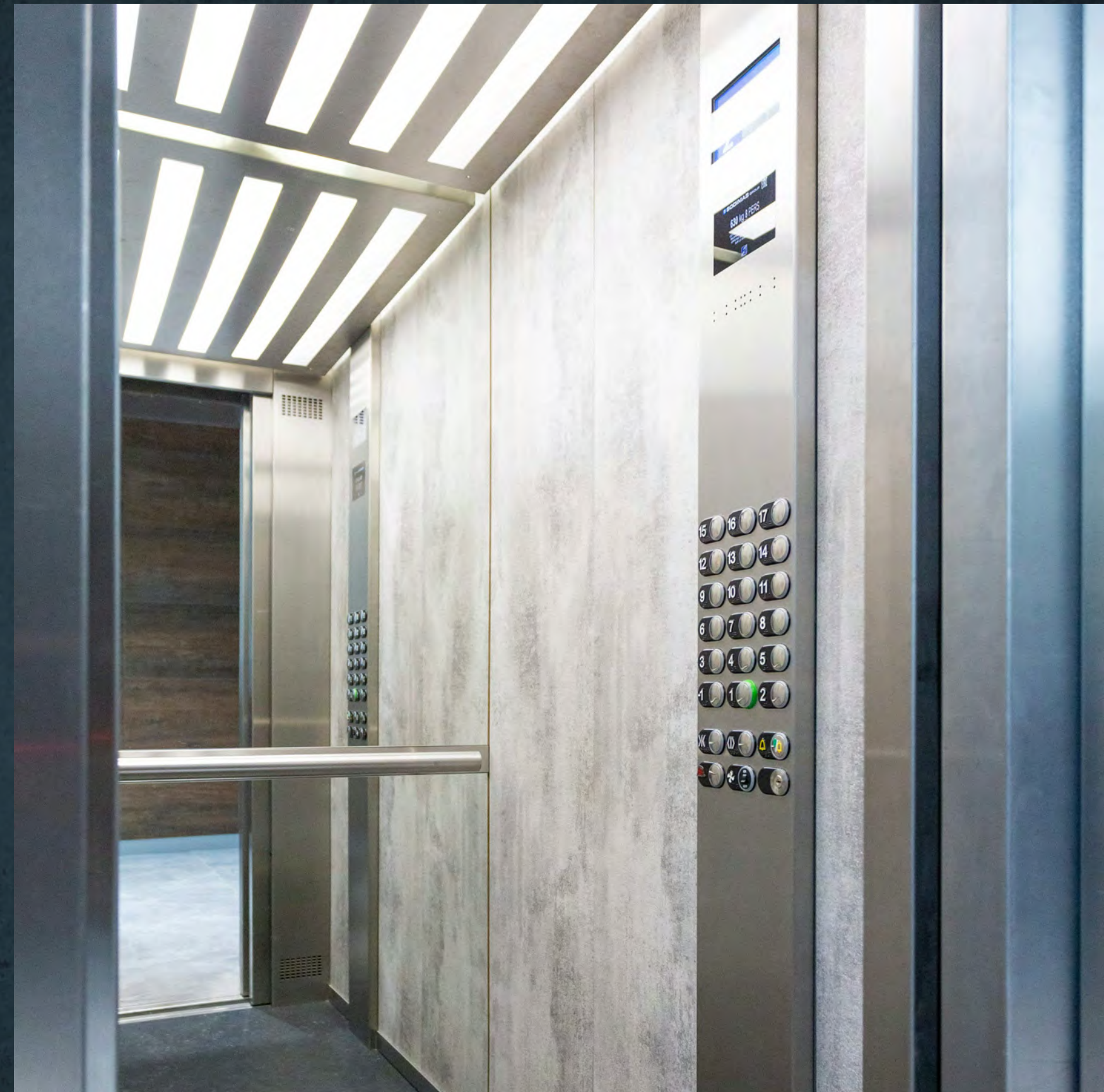


4 LIFT

ON EACH FLOOR

EACH UNIT HAS

ONE LIFT





2 HALL

3 BEDROOM

1 KITCHEN

PANORAMA BALCONY



GROUND FLOOR PLAN

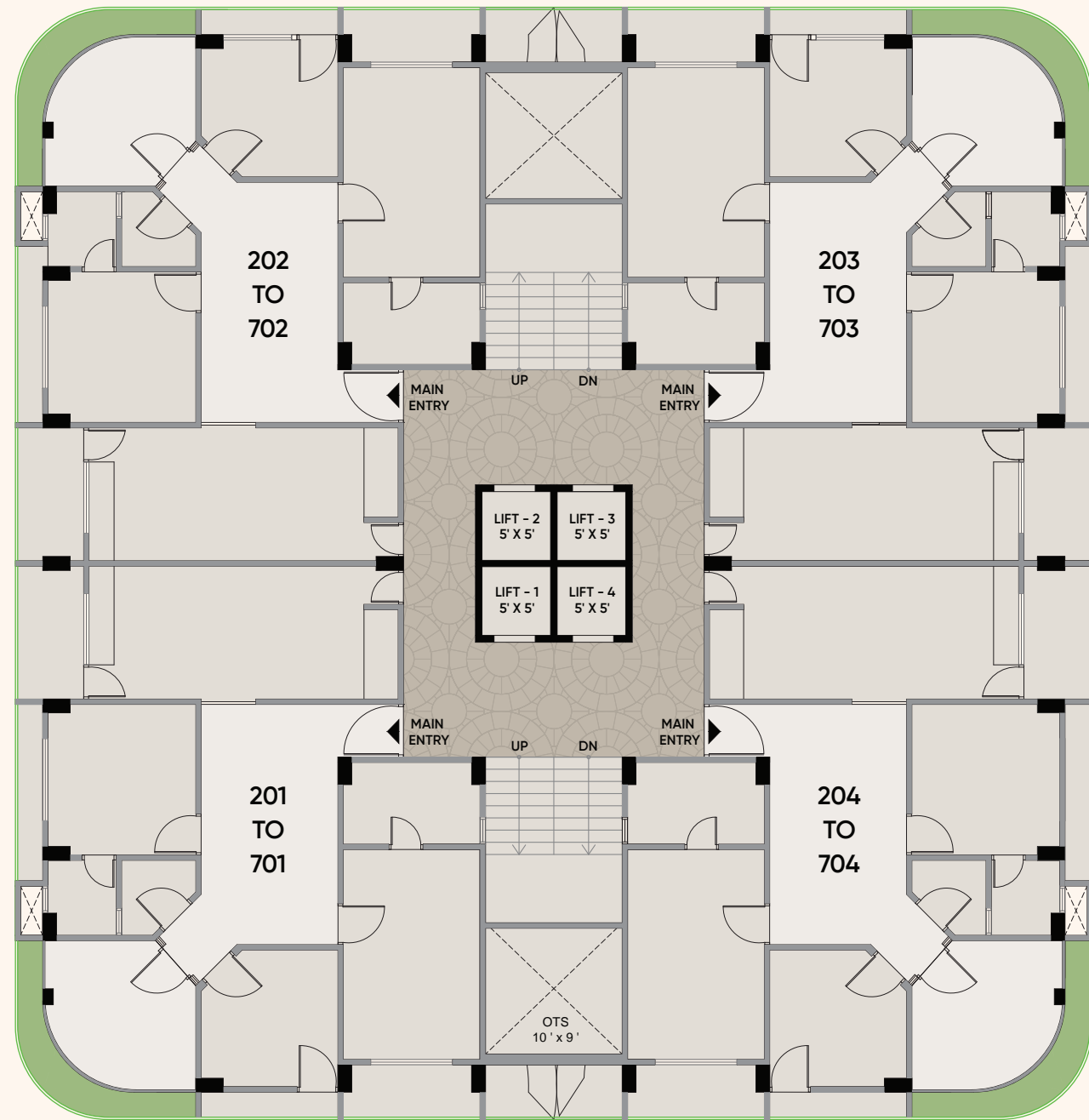


1ST FLOOR PLAN

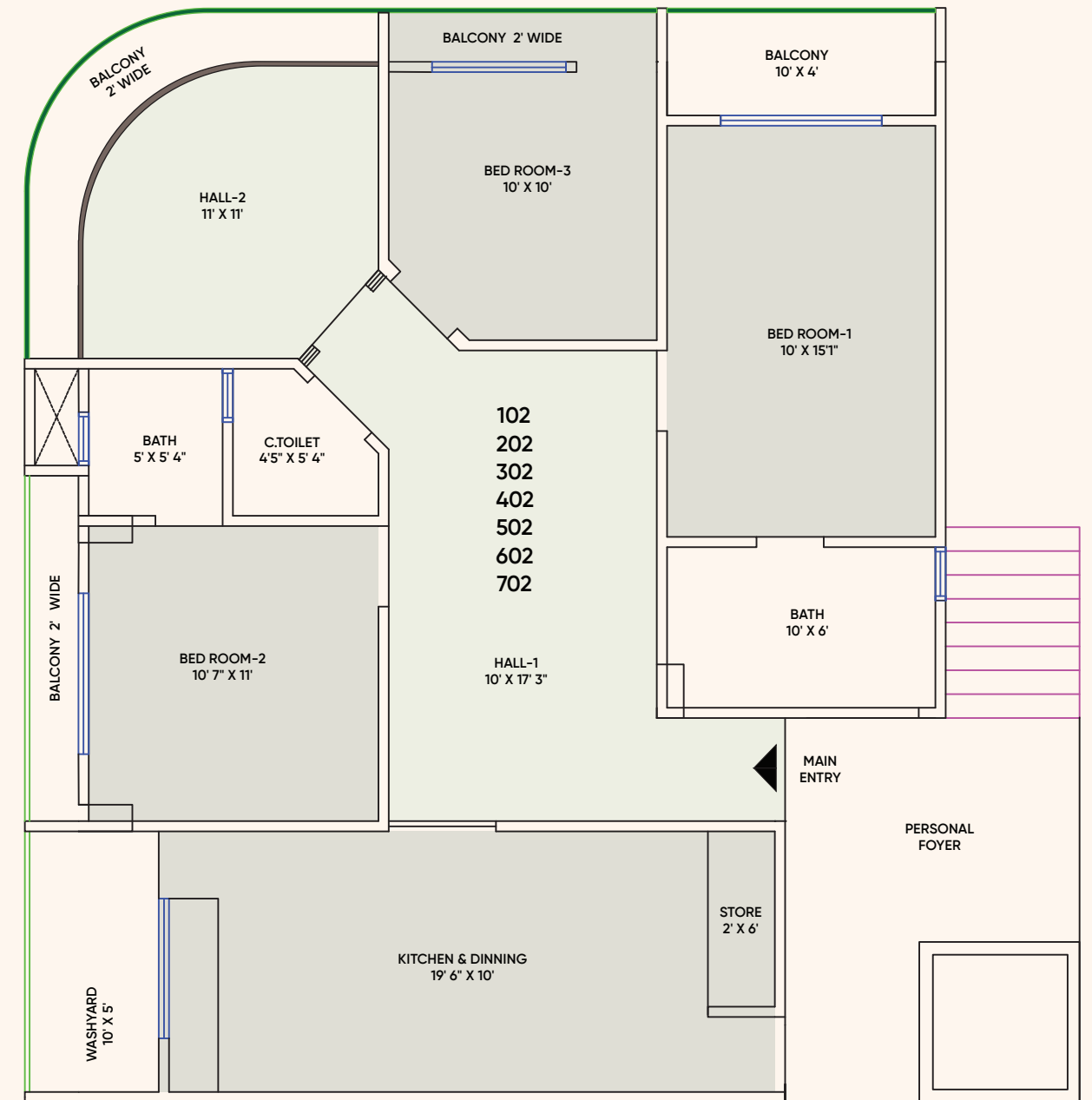




TYPICAL FLOOR PLAN



UNIT PLAN - 1



PROJECT HIGHLIGHT



Touch Screen Switchboard:

Control your entire home environment with a simple touch. Experience the epitome of modern living with intuitive control at your fingertips.



Garbage Chute:

Effortlessly dispose of trash without leaving your apartment. Enjoy a clean and odor-free living space with the ease of a dedicated disposal system.



Home Automation:

Home automation offers an unparalleled level of convenience, efficiency, and security for your modern lifestyle.



Crusher:

Maintain a clean and hygienic kitchen environment with the convenience of an in-sink crusher. Effortlessly dispose of food scraps without leaving your kitchen.



Terrace Garden:

Whisk yourself away to a private sanctuary amidst the city. Enjoy a cup of tea surrounded by lush greenery in your very own rooftop garden.



Basement Height:

A basement height of 15 feet is quite substantial. This height provides ample space for various purposes

SPECIFICATION



Flooring:

- Full body tiles flooring in wash area
- Premium brand tiles flooring in all bedroom



Windows:

- Premium quality Aluminum glazed windows



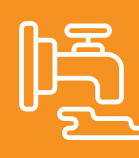
Doors:

- Internal doors with wooden frames and enamel paint on both sides
- Standard quality hardware



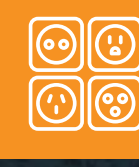
Kitchen:

- Premium brand tiles flooring in kitchen and store
- Full body tiles flooring in wash area



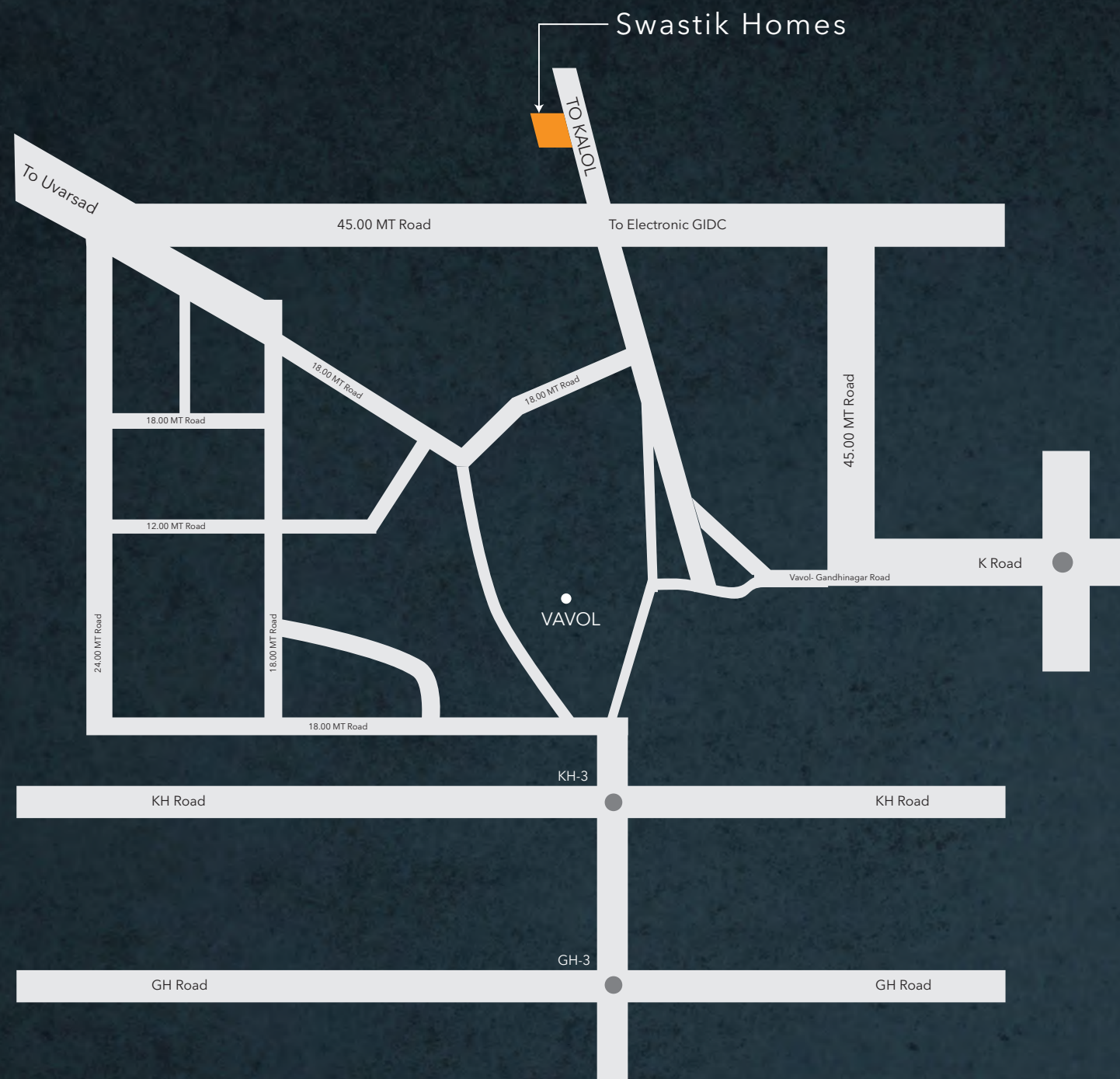
Water:

- All piping for hot/cold water supply and space provision water heaters
- Centralized water softening system



Electrification:

- Three phase concealed ISI quality copper wiring
- Branded modular switches and distribution board



*Prime Location,
Premium Living.*

Address : Swastik Homes, Nr.Sarba Petrol Pump, Vavol-Kalol Road, Vavol, Gandhinagar

Distance from Major Destinations

Vaishnodevi Mandir	14.0 km
Karnavati Dental College	7.0 km
Sargasan Circle	5.2 km
Mahatma Mandir	3.3 km
Swarnim Sankul	6.1 km

Distance from Major Cities

Gata, Ahmedabad	19.0 km
Kalal	15.3 km
Mansa	25.8 km
Mehsana	59.0 km

NOTES : Our rates are based on as per RERA area. • Stamp duty, registration fee, miscellaneous, etc. • All fresh levies/taxes or increases in any of the existing levies/taxes, other charges and expenses levied by the state, central government, or local authority charges, and Narmada water and GSPC gas connection charges will be extra. Changes in external elevation shall not be permitted. • Internal changes shall be done only with prior permission; • Variation in shades and size likely in vitrified and glazed tiles due to constraints of availability and manufacturing • Details and dimensions in the model and brochure are indicative and for the tentative representation only, which should not be treated as legal documents or consumer contracts. • Possession of the flats shall be offered only after 15 days from the full payment. • All possible loan papers shall be made available for procuring loans. • All payments (100%) to be made in the name of "IN INFRA."

